

**Não criamos este arquivo.**

**Autoria desconhecida. A única referência está na última tela.**

**Disponível na Web, e gostando,  
entendemos ser interessante sua divulgação.**

**Academia Snooker Clube  
Sorocaba - SP  
Paulo Dirceu Dias**

**[www.snookerclube.com.br](http://www.snookerclube.com.br)**

**[paulodias@pdias.com.br](mailto:paulodias@pdias.com.br)**















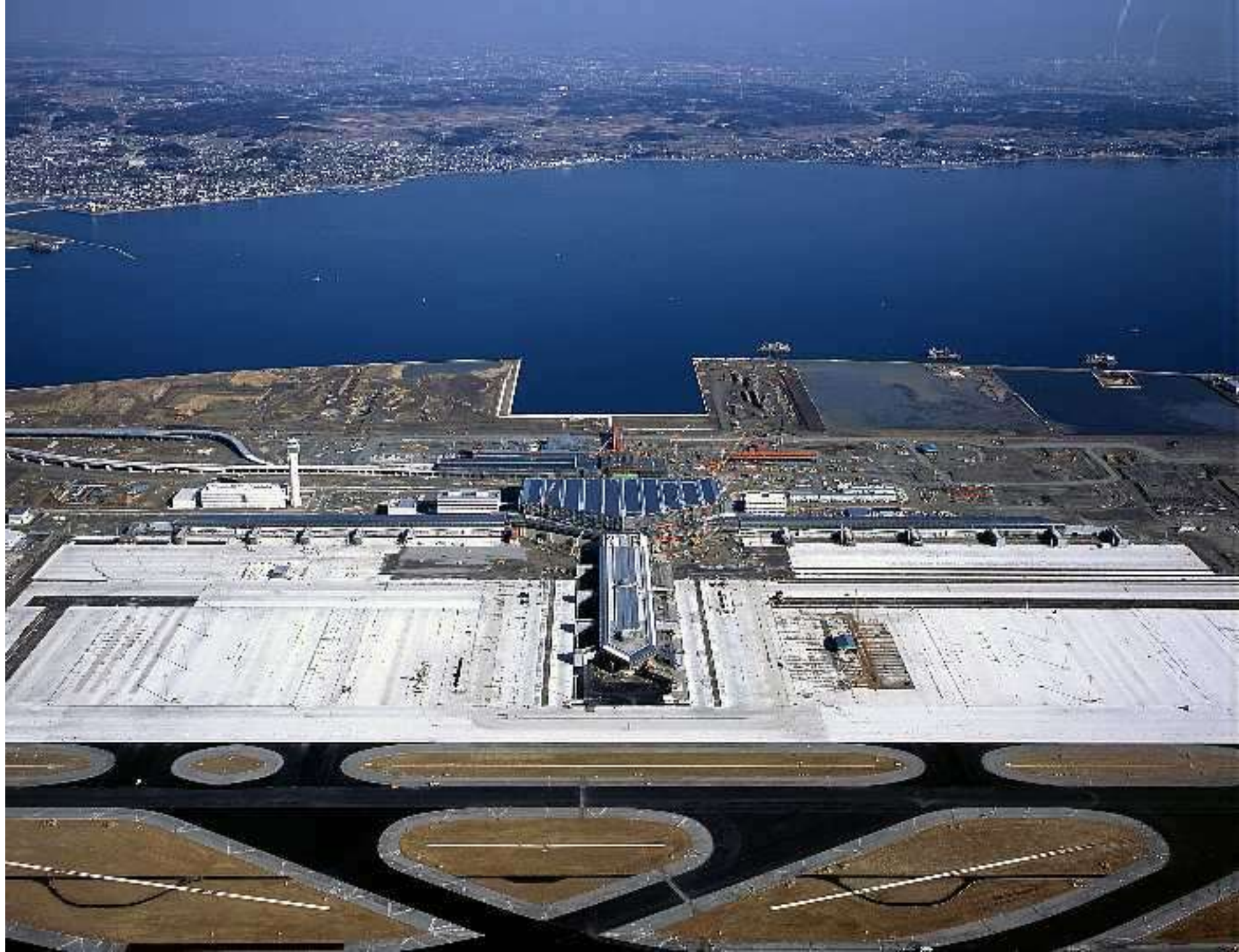












## CENTRAL JAPAN INTERNATIONAL AIRPORT SPECIFICATION

<b>Key Data</b>	
Order year	1998
Construction started	2002
Project type	New airport
Location	Ise Bay, Tokoname, Japan
Estimated investment	¥768 billion (US\$7 billion)
Completion	2005
<b>Key Players</b>	
Sponsors	Central Japan International Airport Company Ltd (CJIAC)
Lead contractors, designers, architects and engineers	Nikken Sekkei Ltd, Azusa Sekkei Co., Hellmuth, Obata and Kassabaum Inc., Bovis Program Management Japan Inc., Penta-Ocean Construction Co., Ltd, Bechtel Inc, Sunitomo Osaka Cement Co.
Financing	Central Japan International Airport Company Ltd (CJIAC)
<b>Traffic</b>	
Passengers (estimated) per year	8 million international, 12 million domestic
Air cargo (estimated)	430,000t per annum international, 80,000t per annum domestic
Landings and takeoffs	130,000 takeoffs and landings per year

[http://www.airport-technology.com/projects/central\\_asia/index.html](http://www.airport-technology.com/projects/central_asia/index.html)